



Multiparametric MRI at 3 T of Usual Prostatic Carcinoma with Neuroendocrine Differentiation: First Case Report

LETTER TO THE EDITOR

Michele Scialpi¹, Luca Roncati², Teresa Pusioli³

Neuroendocrine tumors (NETs) develop from cells of the neuroendocrine system. These neoplasms may be solitary or associated with tumors localized in distant organs, and their radiological diagnosis may be problematic (1).

Prostatic NETs include the following: 1) usual prostatic adenocarcinoma (PA) with neuroendocrine differentiation, 2) adenocarcinoma Paneth cell-like neuroendocrine differentiation, 3) carcinoid tumor, 4) small cell carcinoma, and 5) mixed neuroendocrine differentiation-acinar adenocarcinoma (2).

Immunohistochemical analysis is essential for prostatic NET diagnosis and is widely used in basic research to understand the pathogenesis of very rare diseases in humans (3, 4).

We report the first presentation of usual PA with neuroendocrine differentiation, with an emphasis on the radiological pattern.

A 64-year-old man presented with acute perineal pain and recent episode of hematuria. Rectal exploration showed intense pain in the prostatic region. The level of serum PSA a month before was 3.8 ng/mL.

Multiparametric MRI (mpMRI), incorporating morphologic T2-weighted imaging (T2WI), diffusion-weighted imaging (DWI), and dynamic contrast-enhanced (DCE) imaging of the prostate with high field strength (3 T) without an endorectal coil, showed a prostatic mass invading the lower left portion of the bladder, the anterior rectal wall, and both obturator muscles (Figure 1). MpMRI revealed the presence of bone and lymph node metastases.

The mass originated from the prostatic peripheral zone and encompassed the central portion of the prostate gland without an apparent infiltrating sign.

Three cores of the right lobe and five cores of the light lobe of the prostate gland showed usual PA with neuroendocrine differentiation (positivity of CD 56, synaptophysin, and NSE), with a high proliferative index (90%). Usual PA with neuroendocrine differentiation is an extremely rare neoplasm (4% of all prostate cancers).

The neoplasm is characterized by high aggressiveness and poor prognosis.

Generally, the level of serum PSA did not increased. Consequently, making an early diagnosis is very difficult. The symptoms are often caused by the invasion of the pelvic and perineal structures when the neoplasm is diffused.

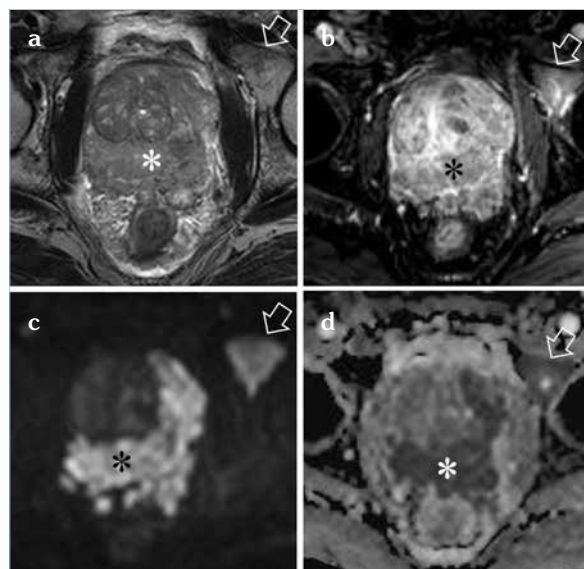


Figure 1. a-d. Multiparametric MRI showed an extensive lesion (*) affecting the peripheral zone of the prostate from the base to the apex, and infiltrating the adjacent anatomic structures. Three cores of the right lobe and five cores of light lobe of the prostate gland showed usual prostatic adenocarcinoma with neuroendocrine differentiation. The lesion appears hypointense on T2-weighted imaging (a), has inhomogeneous enhancement on DCE sequences (b), appears hyperintense on DW MRI (b value=2000 s/mm²) (b) and hypointense on the ADC map (c), indicating restricted diffusion. DW MRI (c, d) and T2-weighted MRI (a) were sufficient to indicate biopsy and further work-up. Note the metastasis in the left ischiatic branch (arrow)

¹Department of Surgical and Biomedical Sciences, Division of Radiology, University of Perugia, Hospital Santa Maria della Misericordia, S. Andrea delle Fratte Perugia, Italy

²Department of Diagnostic and Clinical Medicine of Public Health Section of Pathology, University of Modena and Reggio Emilia, Policlinico Hospital Modena, Italy

³Provincial Health Care Service, Institute of Pathology, Santa Maria del Carmine Rovereto Hospital Trento, Italy

Submitted
02.08.2016

Accepted
06.08.2016

Correspondence

Michele Scialpi,
Department of Surgical and Biomedical Sciences, Division of Radiology, University of Perugia, Hospital Santa Maria della Misericordia, S. Andrea delle Fratte Perugia, Italy
Phone: +39-075-5783507
e.mail:
michelescialpi1@gmail.com

mpMRI has now become the mainstream *choice* for PA *detection and localization* (5, 6). In the reported case, mpMRI showed an extensive PA with neuroendocrine differentiation, with similar signal intensity to that of PA on morphologic T2WI, DWI, and DCE imaging; the lesion involved the peripheral zone of the prostate and infiltrated adjacent anatomical structures. In the reported case, DCE imaging did not add useful information in the detection, localization, and locoregional staging of the tumor. T2WI and DWI (biparametric MRI) resulted accurate for these purposes and for the adequate management of patients (7-9).

Authors' Contributions: Conceived and designed the experiments or case: MS, TP. Performed the experiments or case: MS, TP. Analyzed the data: MS, LR, TP. Wrote the paper: MS, TP, LR. All authors have read and approved the final manuscript.

Conflict of Interest: No conflict of interest was declared by the authors.

Financial Disclosure: The authors declared that this study has received no financial support.

REFERENCES

1. Pusiol T, Zorzi MG, Morichetti G, Pisciole I, Scialpi M. Synchronous non functional duodenal carcinoid and high risk gastro-intestinal stromal tumour (GIST) of the stomach. *Eur Rev Med Pharmacol Sci* 2011; 15(5): 583-5.
2. Epstein JI, Amin MBA, Beltrame M, Masquera JM, Reuter VE, Robinson BD, Troncato P, Rubinetto MA. Proposed morphologic classification of prostate cancer with neuroendocrine differentiation. *Am J Surg Pathol* 2014; 38(6): 756-67. [\[CrossRef\]](#)
3. Roncati L, Pusiol T, Pisciole F, Barbolini G, Maiorana A, Lavezzi A. The First 5-year-Long Surveillance on Intrauterine Unexplained Sudden Deaths from the North East Italy. *Fetal Pediatr Pathol* 2016; 16(3): 1-12.
4. Lavezzi A, Ferrero S, Roncati L, Maturri L, Pusiol T. Impaired orexin receptor expression in the Kolliker-Fuse nucleus in about al pathophysiology. *Neurol Res* 2016; 16(3): 1-12.
5. Scialpi M, Pisciole I, Maglione M, D'Andrea A. Multiparametric magnetic resonance imaging-ultrasound fusion-guided prostate: role in diagnosis and management of prostatic cancer. *Urologic Oncol* 2014; 32(4): 509-10. [\[CrossRef\]](#)
6. Scialpi M, Pisciole I, D'Andrea A. Underestimated role of MRI in EAU guidelines on prostate cancer. *Magnago Responsabile Imaging* 2014; 32(4): 402-3. [\[CrossRef\]](#)
7. Scialpi M, Martorana E, D'Andrea A. Standardizing Biparametric MRI to Simplify and Improve Prostate Imaging Reporting and Data System, Version 2, in Prostate Cancer Management. *Am J Roentgenol* 2016; 207(4): W74-W75. [\[CrossRef\]](#)
8. Scialpi M, Martorana E, Scialpi P, D'Andrea A. Re: PI-RADS version 2: what you need to know. *Clin Radiol* 2016; 71(9): 934-5. [\[CrossRef\]](#)
9. Scialpi M, Falcone G, Scialpi P, D'Andrea A. Biparametric MRI: a further improvement to PIRADS 2.0? *Diagn Interv Radiol* 2016; 22(3): 297-8. [\[CrossRef\]](#)